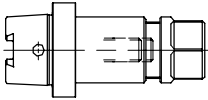


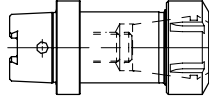
für manuellen Werkzeugwechsel for manual tool change

HSK-C

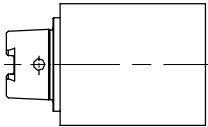
Typ 288-21
Spannfutter - clamping chuck
ESX/ER16



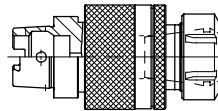
Typ 288-21
Spannfutter - clamping chuck ESX/ER 32



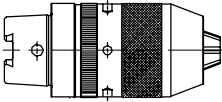
Typ 288-20
Werkzeug-Rohling - tool blank



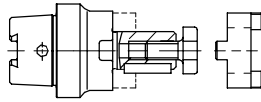
Typ 316-55
Pendelhalter - floating chuck



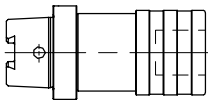
Typ 135-48
Bohrfutter - drill chuck



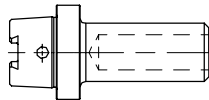
Typ 288-22
Fräserdorn - cutter arbor



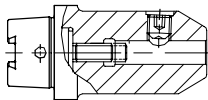
Typ 344-90
Gewindeschneid-Schnellwechselfutter
quick change tapping chuck



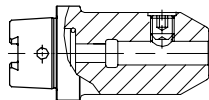
Typ 288-30
Prüfdorn - test bar



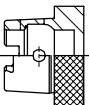
Typ 288-24
Zwischenhülse - adapter sleeves
Whistle notch - DIN 1835-E



Typ 288-23
Zwischenhülse - adapter sleeves -
Weldon - DIN 1835-B



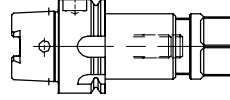
Typ 288-92
Verschlußstopfen - plug



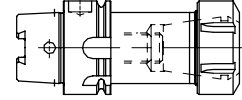
für automatischen Werkzeugwechsel for automatic tool change

HSK-A

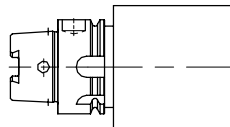
Typ 288-01
Spannfutter - clamping chuck
ESX/ER 16



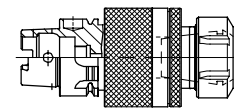
Typ 288-01
Spannfutter - clamping chuck ESX/ER 32



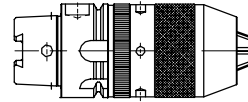
Typ 288-00
Werkzeug-Rohling -
tool blank



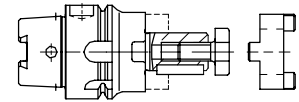
Typ 316-50
Pendelhalter - floating chuck



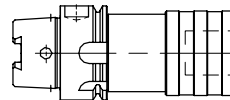
Typ 135-47
Bohrfutter - drill chuck



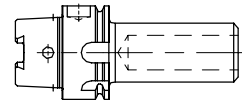
Typ 288-02
Fräserdorn - cutter arbor



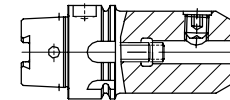
Typ 344-91
Gewindeschneid-Schnellwechselfutter
quick change tapping chuck



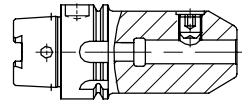
Typ 288-10
Prüfdorn - test bar



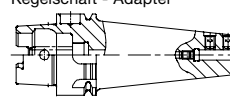
Typ 288-04
Zwischenhülse - adapter sleeves
Weldon - DIN 1835-E



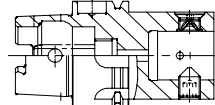
Typ 288-03
Zwischenhülse - adapter sleeves
Weldon - DIN 1835-B



Typ 288-03
Zwischenstück mit HSK-A
Kegelschaft - Adapter



Typ 288-32
ABS-Aufnahme - ABS-Mounting



Typ 288-31
MK-Aufnahme - steep taper mounting

